

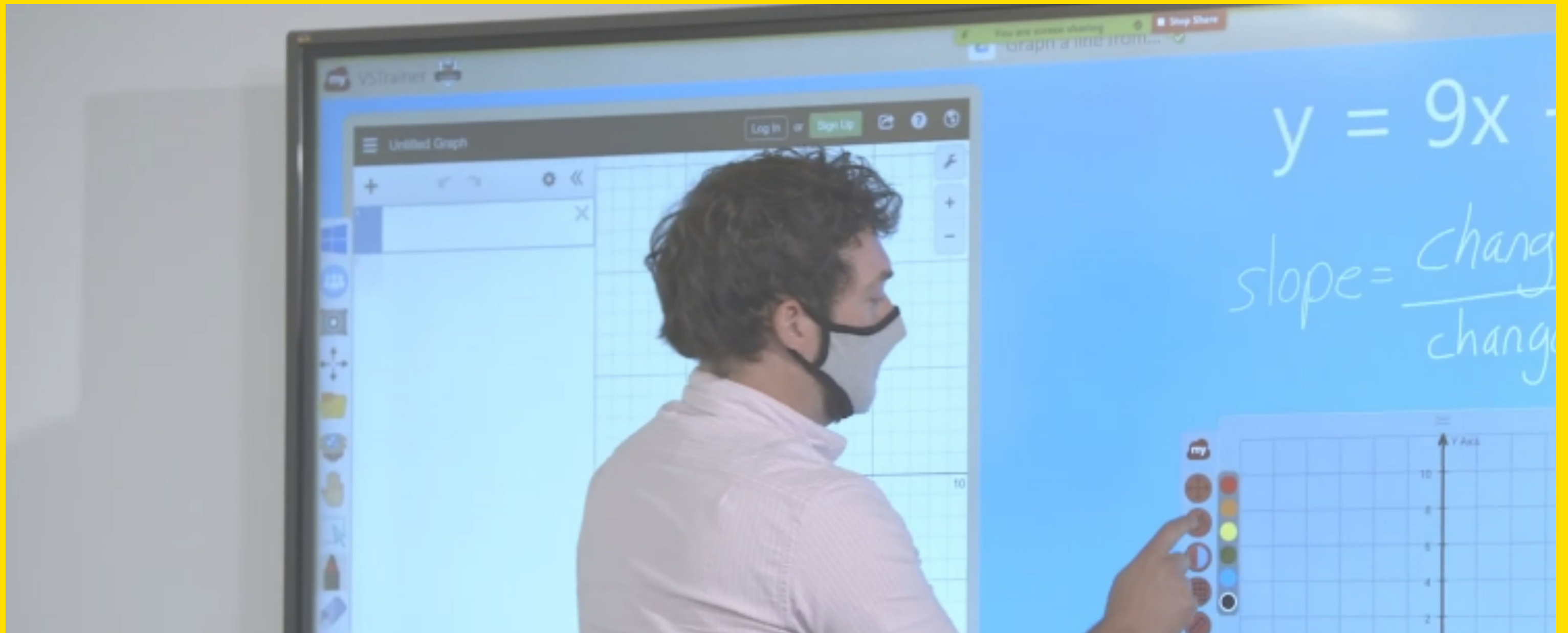
RUS/DLT



InCare^{K12}

A NEW WAY TO TEACH

GRANT SUMMARY



What is RUS???

The RUS/DLT Grant is a federal grant funded by the USDA to implement distance learning solutions or telemedicine equipment. The Rural Utility Service department spearheads the project. The grant funds hardware, software, licenses, install, training, maintenance, and more!



How much funding?

- Historically speaking, the RUS Grant funds up to 1 million dollars. The applicant is responsible for paying about **13%** of the TOTAL budget. An easy way of thinking is that the equipment costs about 13 cents on the dollar.

Who qualifies??

The project is lead by the Rural Utilities Service, so with this grant the more rural, impoverished, and underserved an area is, the more likely they are to get funded.

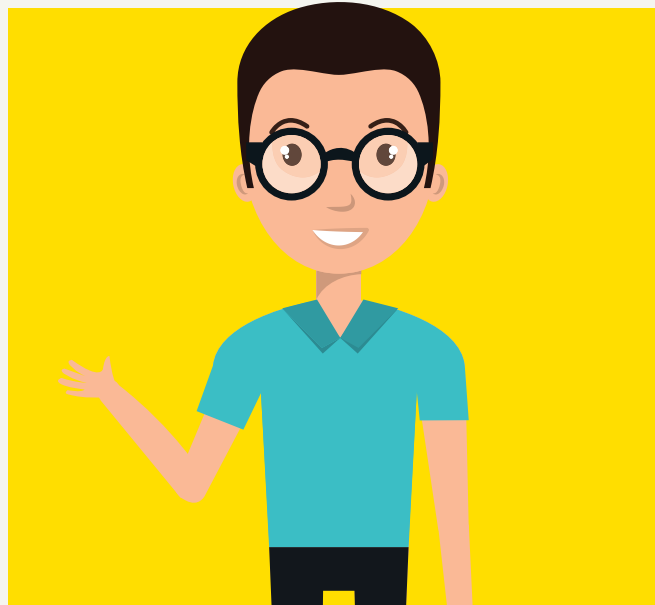
A general rule of thumb is to look at areas that have a population of under 20,000. The lower the population, the better the score.

Special Considerations– STEM, Substance Abuse, Opioid Addiction, Tribal Lands, and more.

We work with Poly's Grant Assistance program to have someone guide your district through the process and identify areas of need and get your score as high as possible!



Types of Projects



Teacher Sharing

Many districts are in need of foreign language teachers, higher level maths and sciences.



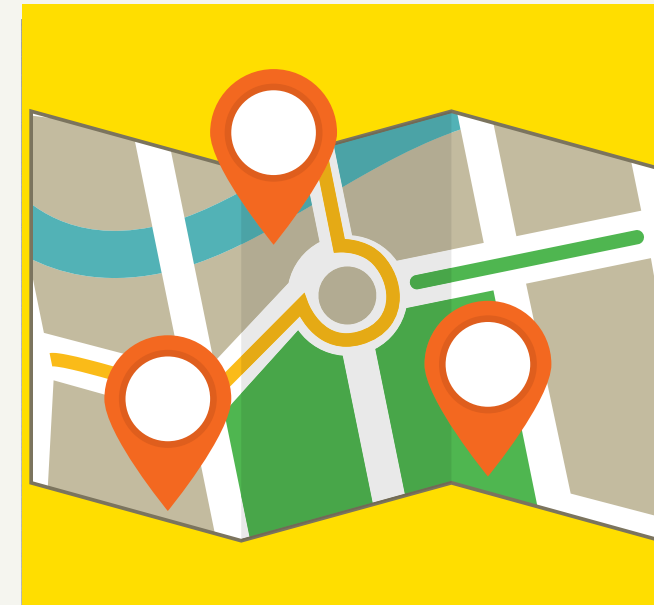
Staff Development

and Training from one site to another and even professional development between districts.



Dual Enrollment

Partner with community colleges, nearby universities, or technical schools



Virtual Field Trips

Rural Districts may not have as much accesibility to go onstie to content rich facilities and this gives an option to bring the content to them



Medical Clinics

From school to health center to provide services traditional healthcare as well as behavioral and mental health

....and more!!!

Types of Equipment



Interactive Panels



Video Conferencing Equipment

All in one- Speakers, Mic, Camera, Codec



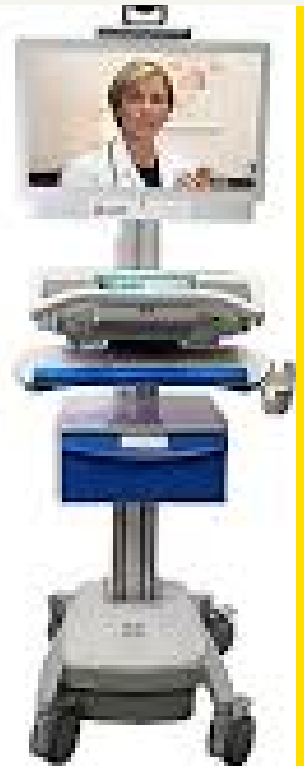
Teacher Assisting and Enrichment Tools

eGlass, document cameras, virtual reality, laptops, monitors, etc.



Headsets

Student and Teacher headsets



Telehealth Stations, Mental and behavioral health technology

....and more!!!



Reach Out to your Rep

Reach out to your rep and let them know you are interested! The Grant guidance is usually released in the firstquarter of the year, then there is 60-90 days to submit from there!

Call with the Grant Team

Hop on a call with our amazing grant support team, through Poly's Grant Assistance program. They will guide you through getting an objective score for your project and brainstorm ideas to get as many points as possible! The grant team will help talk you through many aspects of the grant- the rules, the guidance, what can and cannot be supported, and more!

Dream Big

We will discuss your project, what needs you have, what equipment you dream of implementing. Then, we can propose necessary equipment and help you formulate a budget to go off of so that those dreams can come to fruition.

Submission

Once the project has been dreamed up and all the components have been put together, it is time for submission! The grant usually takes about 6 months to be reviewed and award announcements to take place.